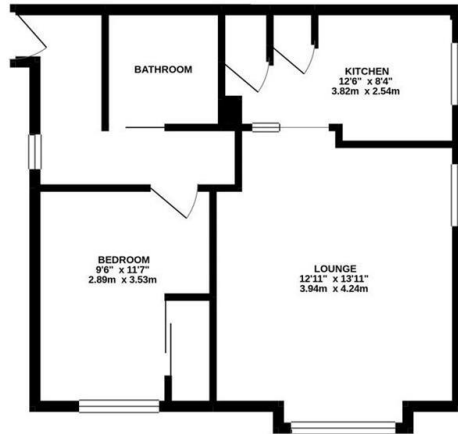


PRICE: £127,500



Vine Court, Dorking Crescent, Cosham, Portsmouth, PO6 2QW

One bedroom second floor flat, benefitting from a southerly aspect. Accommodation includes spacious double aspect lounge, kitchen, bedroom with built in wardrobe, bathroom. There is a garage with up and over door, located in a block at the rear. Vacant property, for sale with no forward chain.

Agents notes:

We have not tested any systems or appliances and no warranty as to the condition or suitability is confirmed nor implied. All measurements are approximate.

These particulars are thought to be materially correct but their accuracy is not guaranteed and they do not form part of any contract.

Communal Entrance
Stairs to second floor.

Entrance Hall
Double glazed window to side aspect. Cupboard housing fuse board, consumer unit and electricity meter. Textured ceiling.

Lounge / Dining Room
Double glazed windows to front and side aspects, two radiators, textured ceiling with coving.

Kitchen
Range of wall and base units with work surfaces incorporating stainless steel sink and drainer, electric oven, four burner gas hob, space for washing machine. Tiled floor, tiled splashback, two built in storage cupboards, double glazed windows to side aspect, textured ceiling.

Bedroom
Built in sliding wardrobe cupboard, double glazed window to front aspect, textured ceiling.

Bathroom
White suite comprising shower cubicle, low level close coupled WC and pedestal sink, heated towel radiator, tiled splash backs, roof window.

Garage
Located in block at rear. Up and over door.

Please Note
Lease 125 years from 2010

Service charge / Ground rent approx. £600 half yearly.

